



Product Datasheet

Sales Enquires: sales@absoluteantibody.com
Support Queries: support@absoluteantibody.com
Tel: +44 (0) 1865 920810
Fax: +44 (0) 1865 920811
absoluteantibody.com

Recombinant Human Free Kappa Light Chain

Cat No: Pr00115

Product Summary

Description: Recombinant human free kappa light chain manufactured using [AbAb's Recombinant Platform](#)

Protein: Human Free Kappa Light Chain

Fc domain: n/a

Structure / Form: Disulfide-linked homodimer

Species: Human

Construct Design Note(s): Kappa light chain from anti-fluorescein [4-4-20 (enhanced)] antibody (c.f. Ab00102)

Host: HEK293

UniProt Accession Number: n/a

Alternative Description: Published Application(s):

Tested Applications(s):

Activity:

Product Form

Purification: Affinity Matrix

Supplied in: PBS with preservative (0.02% Proclin 300)

Endotoxin: <1.0 EU/mg

Shipping: The product is shipped on blue ice. Upon receipt, store it immediately at the temperature recommended.

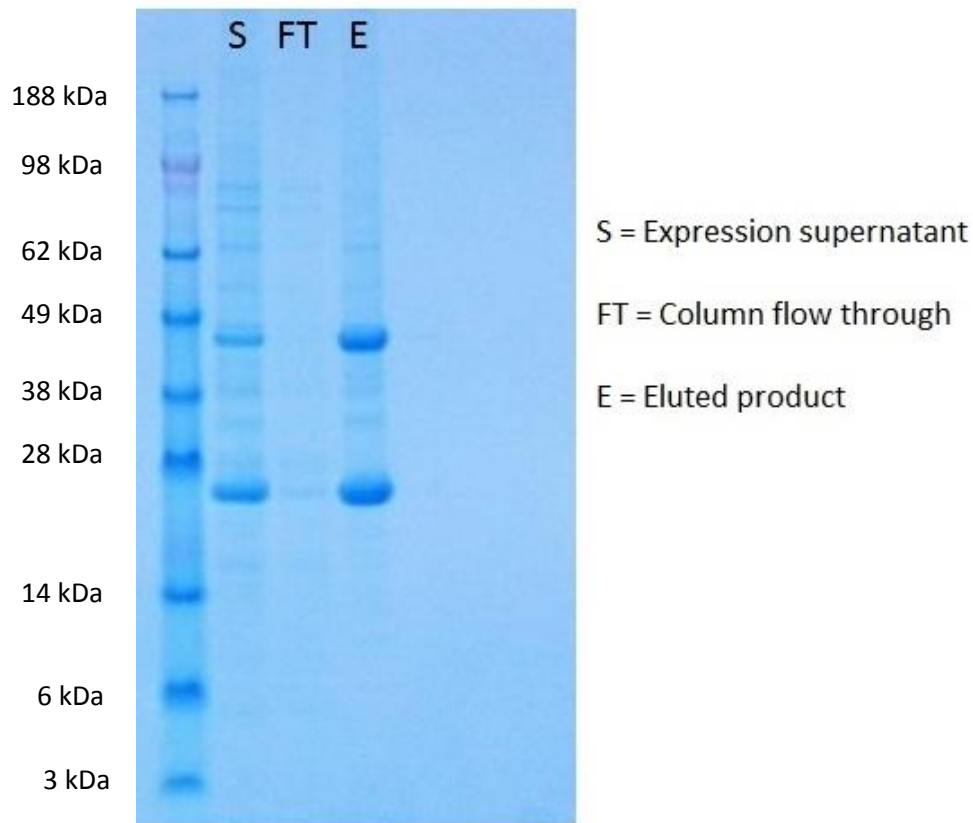
Storage Recommendation: Store at 4°C for up to 1 month. For longer term storage aliquot in small volumes and store at -20°C. Avoid repeated freeze-thaw cycles.

SDS PAGE Purity: >95%, as determined by SDS-PAGE and visualized by Coomassie Brilliant Blue.

Calculated Molecular weight (dimer): 48065 Da

Extinction coefficient: 60570 (calculation performed as described by Pace *et al.* (1995), PMID: 8563639).

Important note - This product is for research use only. It is not intended for use in therapeutic or diagnostic procedures for humans or animals



Coomassie-stained SDS-PAGE gel of human recombinant free kappa light chain. Starting from the tissue culture supernatant, a single purification step was performed to enrich for recombinant free light-chains, both as monomer and dimer (at around 28 and 50 kDa, respectively).

Important note - This product is for research use only. It is not intended for use in therapeutic or diagnostic procedures for humans or animals

Pr00111-1.9 under non-reducing and reducing (DTT) conditions resolved by SDS-PAGE and stained using Coomassie-Blue.

Important note - This product is for research use only. It is not intended for use in therapeutic or diagnostic procedures for humans or animals